

Why does new upcoming EU legislation require every new car to have a digital map?

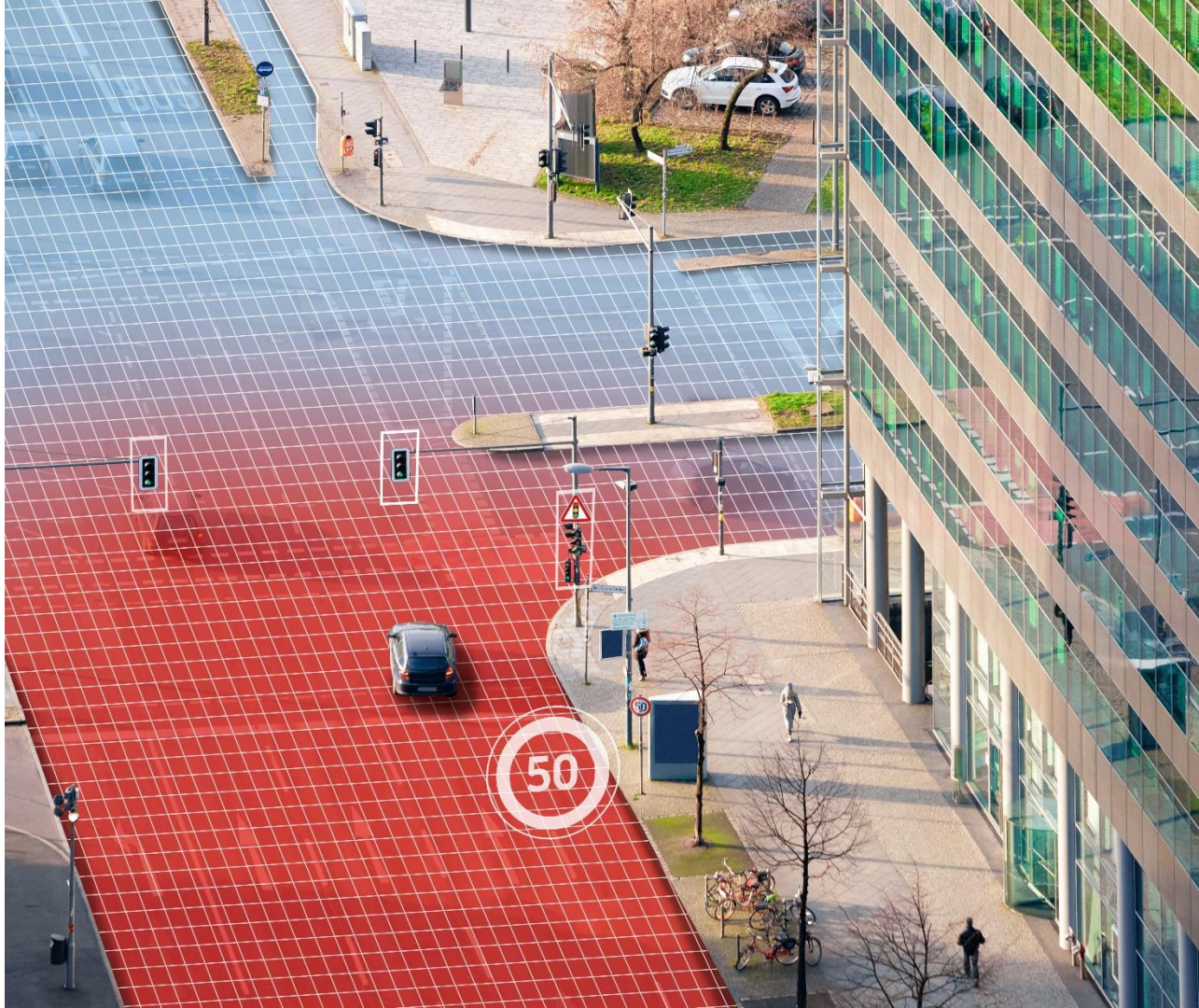
Vincent Demuynck

ITS.Be
September 2021

TOMTOM 

Agenda

- Introduction to Intelligent Speed Assist (ISA)
- How does it work?
- What technology is needed
- Conclusion



Introduction to Intelligent Speed Assistance (ISA)

- ISA should prevent speeding **and improve safety**
- **Valid for European Union** and likely also Norway, UK, Liechtenstein, Switzerland, Iceland and more
- Legislation is technology neutral, but performance requirements make digital maps necessary
- Type approval July 2022 (SOP) and all new vehicle sales per July 2024



How Intelligent Speed Assistance works



1) Car uses GPS positioning and receives current speed limit from a digital map and/or camera



2) Speed limit is displayed



3) If exceeding speed limit, ISA gives warnings to driver. ISA only decelerates if driving <20 km/h



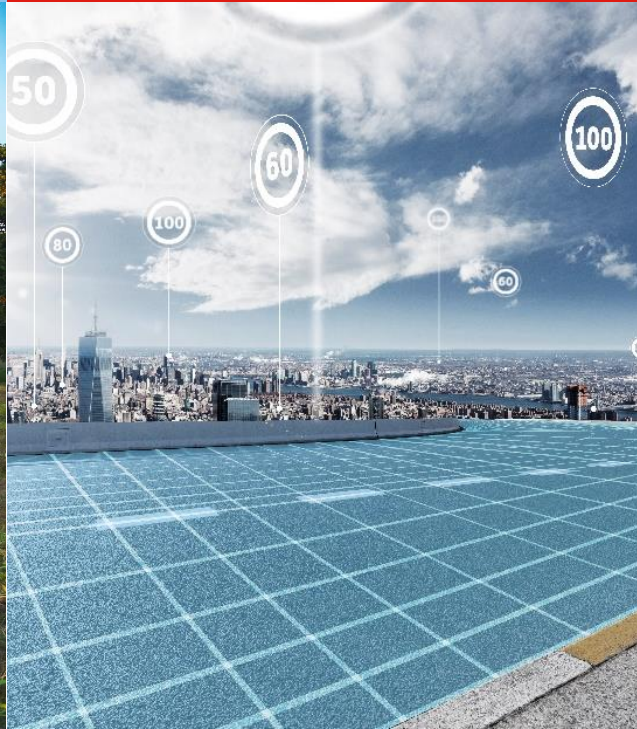
Driver can turn off system but ISA restarts when engine is turned back on again

What technology is needed

Traffic sign recognition



Digital maps with speed limits



UI warnings



Conclusion

- New European legislation to increase safety
- Starts July 2022; every new car in 2024
- Uses camera and digital maps



An aerial view of a multi-lane highway interchange. The road is dark asphalt with white lane markings. Red guardrails line the edges of the road. Numerous 3D models of vehicles, including cars and trucks, are positioned along the road, some appearing to be in motion. The scene is set during the day with clear lighting.

Thank you

A series of red chevrons pointing to the right, arranged in a horizontal line.

Vincent Demuynck

TOMTOM 